

The London Regional Cytology Training Centre

Annual Report 2010/11

Dr Tanya Levine: Director of the LRCTC
Mr David Smith: Manager of the LRCTC
Mr Ian Phillips: Deputy Manager of the LRCTC



London Regional Cytology Training Centre

Table of Contents

1)	Circulation List	3
2)	Staff List.....	4
3)	Executive Summary.....	4
4)	Introduction.....	5
5)	Pre-Registration Programme.....	5
	i) Introductory Course.....	5
	ii) Follow Up Course.....	5
	iii) Pre-Exam Course.....	5
	iv) Monthly Tuition Days.....	6
	v) Host Laboratory Visits.....	6
	vi) Training Officers Meetings.....	6
	vii) Examination Centre for Diploma in Cervical Cytology.....	7
6)	Qualified Staff CPD Programmes.....	7
	i) Update Courses.....	7
	ii) City and Guilds Assessor Training.....	7
	iii) EQA Programme for Cervical Cytology.....	7
	iv) TEQA.....	8
	v) Pathologists Course.....	8
	vi) Medical Specialist Trainees Course.....	8
	vii) One Day Gynae Update for Consultants and AP's.....	8
7)	Additional Course developed in partnership with NHS London....	8
	i) Call/Recall course for PCT administration staff.....	8
	ii) Non-gynae training for BMS staff.....	9
	iii) Cervical Smear Sample Taker Foundation Courses.....	9
	iv) Cervical Smear Sample Taker Update Courses.....	9
	v) NHS Service Provider Meetings.....	9
	vi) Distance Learning.....	10
8)	Course feedback.....	10
9)	Appendices.....	11
	i) Appendix 1: NHS London Contract Performance Indicators (CPI's) 09/10 (Current).....	11
	ii) Appendix 2: Triennial NHSCSP Cytology Training Centre Accreditation 2010/11.....	11
	iii) Appendix 3: Annual Course Planner 2011.....	12
	iv) Appendix 4: LRCTC Activity Statistics 2010//2011.....	13-15

1) Circulation List

NHS London:

- Mr Eddie Ramlakhan – Contracts Manager
- Mr Mark Smith – Chairman of the LRCTC Service Provider Group

London QARC:

- Dr Kathie Binysh – QA Director
- Ms Sharon Whitehurst – NHSCSP Cytology Education Manager

NWLH Trust:

- Ms Fiona Wise – Chief Executive
- Ms Tina Benson - Divisional General Manager for St Marks, Surgery , Imaging, Pathology, 18 Weeks and Private Care
- Dr Gillian Williams – Head of Cellular Pathology and Clinical Director for Pathology

London Cytology Laboratories:

Barts and The London Hospital

Geoffrey Curran – Lab Manager
Bronwyn Prior – TO

Guys and St Thomas Hospital

Margaret Middleton – Lab Manager
Tanya Heard – TO

Kingston Hospital

Allan Brown – Lab Manager
Sue Bonnell – TO

Northwick Park Hospital

David Smith – Lab Manager
Tina Holton – TO

Quest Diagnostics

Nicki Thurlow – Lab Manager
Courtney Ives - TO

St Georges Hospital

Robert Akutu – Lab Manager
Mariet Viljoen – TO

Whipps Cross Hospital

Joanna Bradbury – Lab Manager
Jade Padua –TO

Barnet and Chase Farm Hospital

Hilary Riches – Lab Manager
Lyn Nickolls – TO

Imperial College

Rezzeline Mendiola – Lab Manager
Ann Mitchell - TO

Mayday Hospital

Shu Pai – Lab Manager & TO

South London Healthcare Trust

Parmjit Chana – Lab Manager
Denise Etheridge – TO

Royal Free Hospital

John McGloin – Lab Manager
Teodocia Wright – TO

UCLH

John McGloin – Lab Manager
Rebecca Seedall – TO

Whittington Hospital

Stephanie Fenton – Lab Manager
Marion Fricker – TO

Epsom & St Heliers Hospital

Janice Callaghan – Lab Manager
Sharon Kooner-Evans – TO

Kings College Hospital

Brian Statham – Lab Manager
Shohret Cagacer - TO

North Middlesex Hospital

Stephanie Parker – Lab Manager & TO

Queens Hospital

Priscilla Yoganayagam – Lab Manager
Ben Johnson - TO

TDL

Nick McClenaghan – Lab Manager & TO

University Hospital Lewisham

Linda Page – Lab Manager
Mark Smith – TO

Non-London Cytology Laboratories:

Basildon Hospital

Janet Despres – Lab Manager & TO

Northampton General Hospital

Alan Sharp – Lab Manager
Angela Hook - TO

St Peters Hospital

Behdad Shambayati – Lab Manager
Maria Manalo - TO

Colchester Hospital

David Jefford – Lab Manager
Christine Byrne – TO

Leicester Royal Infirmary

SallyAnn Roberts – TO

Kettering General Hospital

Rosemary Bowden – Lab Manager & TO

Southend Hospital

Sarah Hemingway – Lab Manager
Nicola Curtis – TO

2) Staff List

LRCTC staff member	Position
Dr Tanya Levine	LRCTC Director and Consultant Histopathologist
Mr David Smith	Cytology Lab and the LRCTC Manager
Mr Ian Phillips	Deputy LRCTC Manager
Mr Mark Terry	LRCTC Tutor and Deputy Cytology Lab Manager
Dr Gillian Williams	Head of Histopathology and LRCTC Tutor
Mr Ryan Togher	LRCTC Administrator

3) Executive Summary

The London Regional Cytology Training Centre ran:-

- Thirteen pre-registration courses
- Twelve post-registration courses
- Five medical courses (including ST1 course, Medics/AP one day update, and pathologists one week course covering gynae & non-gynae topics)
- Seven smear takers course
- One PCT Call/Recall course

Grand total of 463 persons underwent training in 2010/11

This is up by 110 (24%) from 2009/10

- All courses except one were rated as “highly relevant” from anonymised feedback.
- The new City & Guilds Diploma is now well embedded in our core curriculum
- We have developed an LRCTC formal user group for NHS London, of service providers. They have given excellent feedback and input into the roll out of our courses and future development.
- The LRCTC has maintained its good working relationship with NHS London and London QARC.

4) Introduction

The London Regional Cytology Training Centre, hosted at North West London Hospitals NHS Trust, was originally founded in 1979; it has a national and international profile for high-quality cervical and non-cervical / diagnostic cytology training. In the last year we have branched into other training activities which reflect the current demand for a wide range of cancer screening training.

5) Pre-registration Programmes

This year has seen the steady demand continue for the two year NHSCSP accredited City & Guilds Diploma for non-medical trainees. Training of C&G assessors from individual laboratories has continued with the certificated training course which aims to familiarise assessors with all aspects of the portfolio work carried out in the work place. To date seven trainees have passed the Diploma this year.

i) Introductory course

This is a four week intensive course, attended within the first 6 months of employment, and after learners has spent a minimum of 6 weeks in the home laboratory. We ran two courses over the year on, 27th September – 26th October 2010 with 5 students and 28th February – 25th March 2011 with 3 students.

ii) Follow-up Course

This is a one week course attended by learners in their second year and designed to re-enforce cytological principles outlined in the introductory course. We ran two courses in this period on 2nd – 6th August 2010 with 7 students and 10th – 14th January 2011 with 3 students.

iii) Pre-exam course

This is a one week revision course focusing on examination technique to candidates sitting their City and Guilds Diploma. Two courses were run over the year on 10th – 14th May 2010 with 2 students and 29th November – 3rd December 2010 with 6 students.

iv) Monthly Tuition Days

The LRCTC runs monthly “tuition days” for all trainees

This is a single day/month whereby trainees attend the LRCTC for topic-related workshops.

It supplements and enhances the introductory and follow-up courses. It allows the LRCTC staff to maintain their contact with trainees and improve monitoring of students’ progress. These days have proved popular with good attendance by all trainees in the system. Nine tuition days were held with a total 58 students attending, this is up by 20 from 2009/10.

v) Host Laboratory Visits

After completion of the Introductory Course a written report is prepared and a member of staff from the LRCTC visits the trainee’s laboratory to present the report to the trainee, training assessor, and laboratory manager. The meeting is designed as a positive feedback mechanism and enables all parties to discuss and sign up to a formal individual training plan whilst discussing the requirements for the portfolio and assignments that will have to be carried out within the department. Eight laboratory visits were carried out.

vi) Training Officer Meetings

NHSCSP requirements are for two meetings a year (28th April 2010 & 25th October 2010) to gain user group feedback from laboratories on our courses and service requirements as well as to keep them updated on current issues. We have now established an NHS Service Providers group which links into our comprehensive performance indicator contract which ensures that all courses are relevant to London Service Providers. This group met on the 9th September 2010 which looked at and reviewed course content, qualifications and general employer requirements. This is part of our annual review and adds to the data required for the NHS London Performance Indicator Contract. All outcome results are fed back electronically after they have been issued and discussed at the NHS London Annual General Review Meeting held on 14th February 2011.

Examination Centre for Diploma in Cervical Cytology

This centre is one of the national examination venues for NHSCSP City and Guilds Diploma. This underscores the high quality facilities and the excellent reputation of the LRCTC staff who administer the exams.

6) Qualified Staff CPD Programmes

i) Update Courses for BMS/Cytoscreeners

Every qualified cytoscreener and biomedical scientist must attend as part of NHSCSP continued professional development a tri-annual 3 day cervical cytology Update course at an accredited cytology training centre. The LRCTC ran seven three-day update courses in this period on, 21st – 23rd April 2010 with 17 students, 8th – 10th June 2010 with 11 students, 22nd – 24th September 2010 with 16 students, 10th – 12th November 2010 with 17 students, 13th – 15th December 2010 with 11 students, 5th – 7th January 2011 with 10 students and 17th – 19th January 2011 with 10 students.

This modular three day update course is regularly re-populated with current topic related slides and in addition completely re-vamped every three years at the start of each new Update cycle. 2011 marked the beginning of a new Update course content cycle with brand new topics, lectures and workshops.

ii) City & Guilds Assessor training

Our deputy training centre manager has led on the design of a new national courses for all qualified training assessors. This course is designed to fully equip the assessors to plan, feedback, and review and mark their Learners City & Guilds portfolio assignments. One course was held this year with three assessors attending and gaining certification.

iii) External Quality Assurance Programme for Cervical Cytology (EQA)

The LRCTC is host to representatives from London Regional QARC to assess slides for inclusion in the mandatory regional EQA programmes. Use of the LRCTC's state-of-the-art multiheaded microscope is essential for this programme. The training centre was used as a resource for five days this year on the national quality programme.

iv) Technical External Quality Assurance TEQA

The LRCTC hosts a tri-monthly two day Technical EQA workshop for the London Region which is facilitated by the high-class facilities and on hand expertise of staff. The LRCTC hosts the annual London Region TEQA meeting for London regional representatives to give feedback on slide-staining quality issues and is mandatory for a quality assured cervical screening programme. The training centre was used as a resource for nine days on this national quality programme

v) Pathologists course

The LRCTC, since its inception in 1979, has always run a Pathologists course aimed primarily at trainee pathologists about to sit their MRCPPath examination. This is a highly successful five day course covering gynae and non-gynae samples. Due to demand we have increased the course frequency from one to two courses per annum. This course was run on, 13th – 17th September 2010 with 14 students and 7th – 11th February 2011 with 16 students.

vi) Medical Specialist Trainees course

The LRCTC runs a five day basic gynaecological cytology course for London Regional ST's, which is contracted by the London Deanery as part of their specialist pathology training. This was held on the 1st – 5th November 2010 with 14 students attending.

vii) One Day Gynae Update for Consultants and AP staff:

A one day update for consultant pathologists and advanced practitioner biomedical scientists has been developed since 2008, and aims to maintain their continued professional development in cervical cytology. Two courses were run in 2010/11 on 25th May 2010 with 9 students and 18th November 2010 with 14 students.

7) Additional Courses developed in partnership with NHS London

i) Call/Recall Course for PCT administration staff

This is a one-day update for all PCT administrative staff working in cervical cytology screening. It is a new course, developed and rolled-out in 2008, to provide a contextual basis and whole pathway approach to cervical cancer screening previously lacking in PCT staff training. This was held on the 1st July 2010 with 9 in attendance.

ii) Non-gynae training for BMS staff

The LRCTC has enhanced its non-gynae cytology training portfolio for BMS to support the introduction of the IBMS Diploma in Expert Practice in Non-Gynaecologic Cytology. Brand new courses introduced in 2008 include two day respiratory, fluid and urine cytology training. This training will be a key component in supporting BMS staff not only for CPD but in career progression.

Courses held on the 17th – 18th June 2010 with 12 students, 2nd – 3rd September 2010 with 11 students and 15th – 16th November with 14 students.

iii) Cervical Smear Sample Takers Foundation Courses

This is an innovative two day introductory course run by LRCTC for its three host PCT's, for all new cervical sample takers. Crucially it has allowed us to develop for the first time a current and flexible database of all new sample takers, including the issuing of a unique individual registration numbers.

Two course were run in 2010/11 the first on 16th July & 28th July 2010 with 16 students and the second being run on 17th & 24th February 2011 with 18 students.

iv) Cervical Smear Sample Takers Update Courses

In conjunction with the three local PCT's our administrator has a comprehensive database of all qualified smear taker staff which is regularly updated, this allows us to schedule Update courses. The Update cervical smear taker's courses for the region ensure all clinical staff taking cervical smears maintain their certification by regular triennial updates as part of their continuing professional development in practice. Five course were run in the 2010/11 period on 27th April 2010 with 19 students, 16th July 2010 with 18 students, 25th November 2010 (Morning) with 20 students, 25th November (Afternoon) with 13 students and 24th February 2010 with 18 students.

v) NHS Service Provider Meeting :

As part of our new Performance Indicator Contract we have set up the London NHS Service Providers group which will undertake to discuss annual reports and confirm action plans, agree training course requirements and employers needs, this will work in partnership with the HEI/TEP and NHS London. The inaugural meeting was held on the 9th September 2010 and was well attended with 14 representatives from as many trusts around London. All outcome results are fed back electronically after they have been

issued and discussed at the NHS London Annual General Review Meeting held on 14th February 2011.

vi) Distance Learning

The LRCTC has a dedicated website (www.lrctc.org.uk) which includes educational packages for CPD and distance learning.

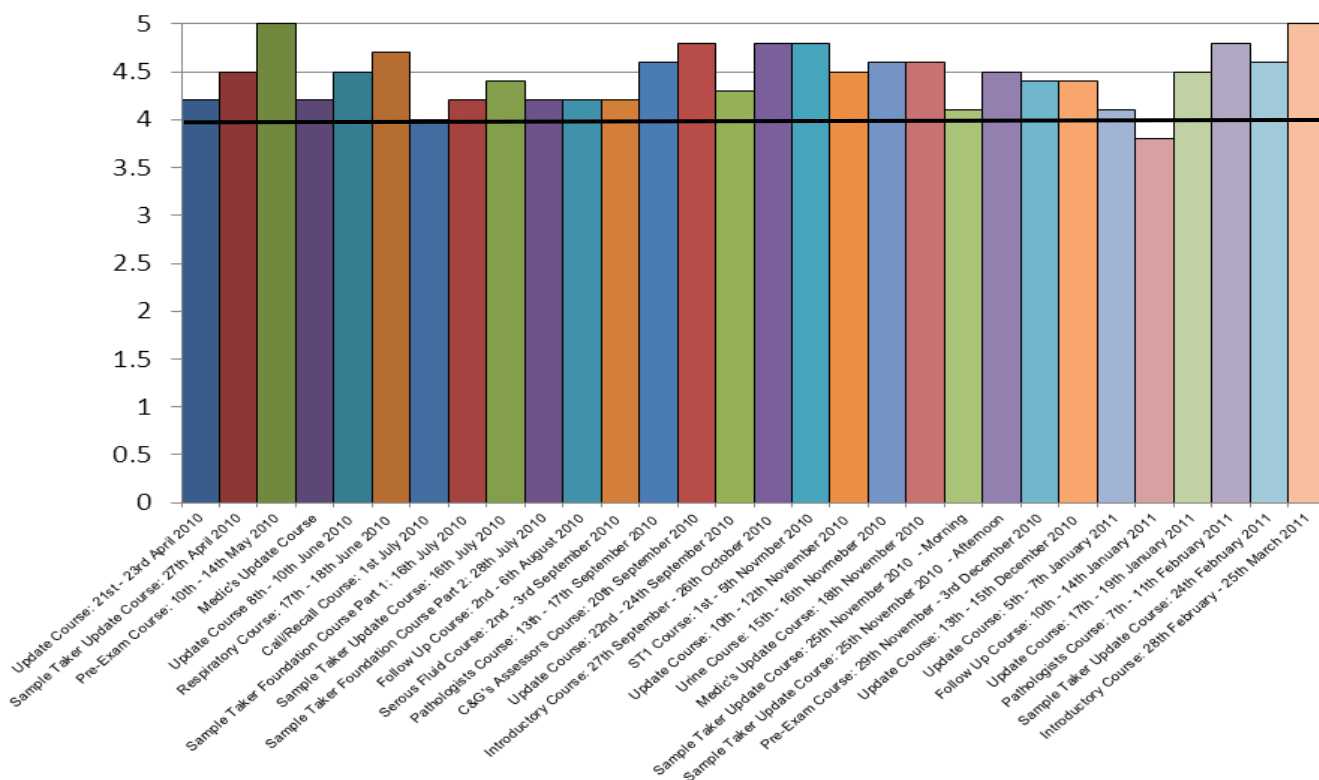
We have introduced a web-based marking scheme for relevant courses where students need to review slides at their host laboratory site but are “virtually” marked and graded by us at the LRCTC.

Work is ongoing and we are currently working with our IT department and an IT company in looking at the best configuration for installing Moodle a Virtual Learning Environment (VLE) to allow students better access to resources and to try an integrate our teaching into a blended learning environment.

8) Course feedback

All courses held in 2010/11 except one were rated as “highly relevant” to student’s needs and work place requirements. These figures are based on anonymised feedback from participants on each course

Course Evaluation Scores for 10/11



9) Appendices

i) Appendix 1: NHS London Contract Performance Indicators (CPI's) 09/10 (Current)

Our “annual report” for NHS London has evolved since 2009. This is part of our Performance Indicator Contract in which we receive RAG ratings on our performance each academic yearly cycle.

We received a Performance Rating of 100% with a RAG rating of Green (a copy is available on request)

ii) Appendix 2: Triennial NHSCSP Cytology Training Centre Accreditation 2010/11

The Triennial NHSCSP Cytology Training Centre Accreditation Inspection was carried out on the 7th December 2010 – We gained full accreditation on the 23rd March 2011

iv) Appendix 4: LRCTC Activity Statistics 2010/2011

Course	Students			Evaluations			
	London	Non-London	Total	Returned	Average Score	No > 4	No > 3
Tuition Day 9 th April 2010	4	4	8	-	-	-	-
Update Course 21 st – 23 rd April 2010	14	3	17	14	4.2	10	4
Training Officers Meeting 28 th April 2010	17	0	17	17	3.7	7	9
Tuition Day 7 th May 2010	3	4	7	-	-	-	-
Pre-Exam Course 10 th – 14 th May 2010	2	0	2	2	5	2	0
Medic's Update Course 25 th May 2010	9	0	9	9	4.2	6	3
Update Course 8 th – 10 th June 2010	9	2	11	11	4.5	10	1
Tuition Day 11 th June 2010	2	4	6	-	-	-	-
Respiratory Course 17 th – 18 th June 2010	11	1	12	10	4.7	7	3
Call / Recall Course 1 st July 2010	9	0	9	9	4	4	5
Tuition Day 2 nd July 2010	4	4	8	-	-	-	-
Follow Up Course 2 nd – 6 th August 2010	6	1	7	7	4.2	3	4
Serous Fluid Course 2 nd – 3 rd September 2010	10	1	11	11	4.2	9	2
Tuition Day 10 th September 2010	4	3	7	-	-	-	-
Pathologists Course 13 th – 17 th September 2010	3	11	14	10	4.6	8	2
C&G's Assessors Training 20 th September 2010	1	2	3	3	4.8	3	0

Course	Students			Evaluations			
	London	Non-London	Total	Returned	Average Score	No > 4	No > 3
Update Course 22 nd – 24 th September 2010	10	6	16	15	4.3	14	1
Intro Course 27 th September – 26 th October 2010	1	4	5	5	4.8	5	0
Tuition Day 29 th October 2010	1	4	5	-	-	-	-
SHO Course 1 st – 5 th November 2010	14	0	14	11	4.8	11	0
Update Course 10 th – 12 th November 2010	5	12	17	14	4.5	9	5
Urine Course 15 th – 16 th November 2010	6	4	10	9	4.6	9	1
Medic's Update Course 18 th November 2010	3	11	14	10	4.6	8	2
Tuition Day 19 th November 2010	1	4	5	-	-	-	-
Pre-Exam Course 29 th Nov – 3 rd December 2010	5	1	6	5	4.4	5	0
Update Course 13 th – 15 th December 2010	7	4	11	11	4.4	9	2
Update Course 5 th – 7 th January 2011	10	0	10	10	4.1	7	3
Follow-Up Course 10 th – 14 th January 2011	0	3	3	3	3.8	1	2
Update Course 17 th – 19 th January 2011	2	8	10	10	4.5	9	1
Tuition Day 21 st January 2011	4	1	5	-	-	-	-
Pathologists Course 7 th – 11 th February 2011	9	7	16	16	4.8	16	0
Tuition Day 18 th February 2011	4	3	7	-	-	-	-
Introductory Course: 28 th February – 25 th March 2011	1	2	3	3	5	3	0

LRCTC Sample Taker Activity Statistics 2010/2011

Course	Students					Evaluations				Cancelled
	Brent	Harrow	Hillingdon	Other	Total	Returned	Average Score	No > 4	No > 3	
Foundation Course: Part 1 Friday 16 th July 2010	2	8	2	4	16	13	4.2	9	4	3
Foundation Course: Part 2 Wednesday 28 th July 2010	1	6	2	3	12	12	4.2	9	3	7
Foundation Course: Part 1 Thursday 17 th February 2011	7	2	2	7	18	17	4.5	16	1	2
Foundation Course: Part 2 Thursday 24 th February 2011	7	2	2	7	18	18	4.4	16	0	0
Update Course: Tuesday 27 th April 2010 - Morning	3	8	8	0	19	1	4.5	1	0	2
Update Course: Friday 16 th July 2010 - Morning	4	2	11	1	18	13	4.4	16	2	1
Update Course: Thursday 25 th November 2010 – Morning	4	3	13	0	20	16	4.1	12	3	0
Update Course: Thursday 25 th November 2010 – Afternoon	5	3	5	0	13	13	4.5	12	1	4
Update Course: Thursday 24 th February 2011 – Afternoon	4	3	11	0	18	18	4.6	16	2	2